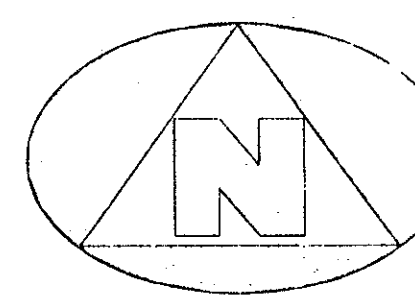


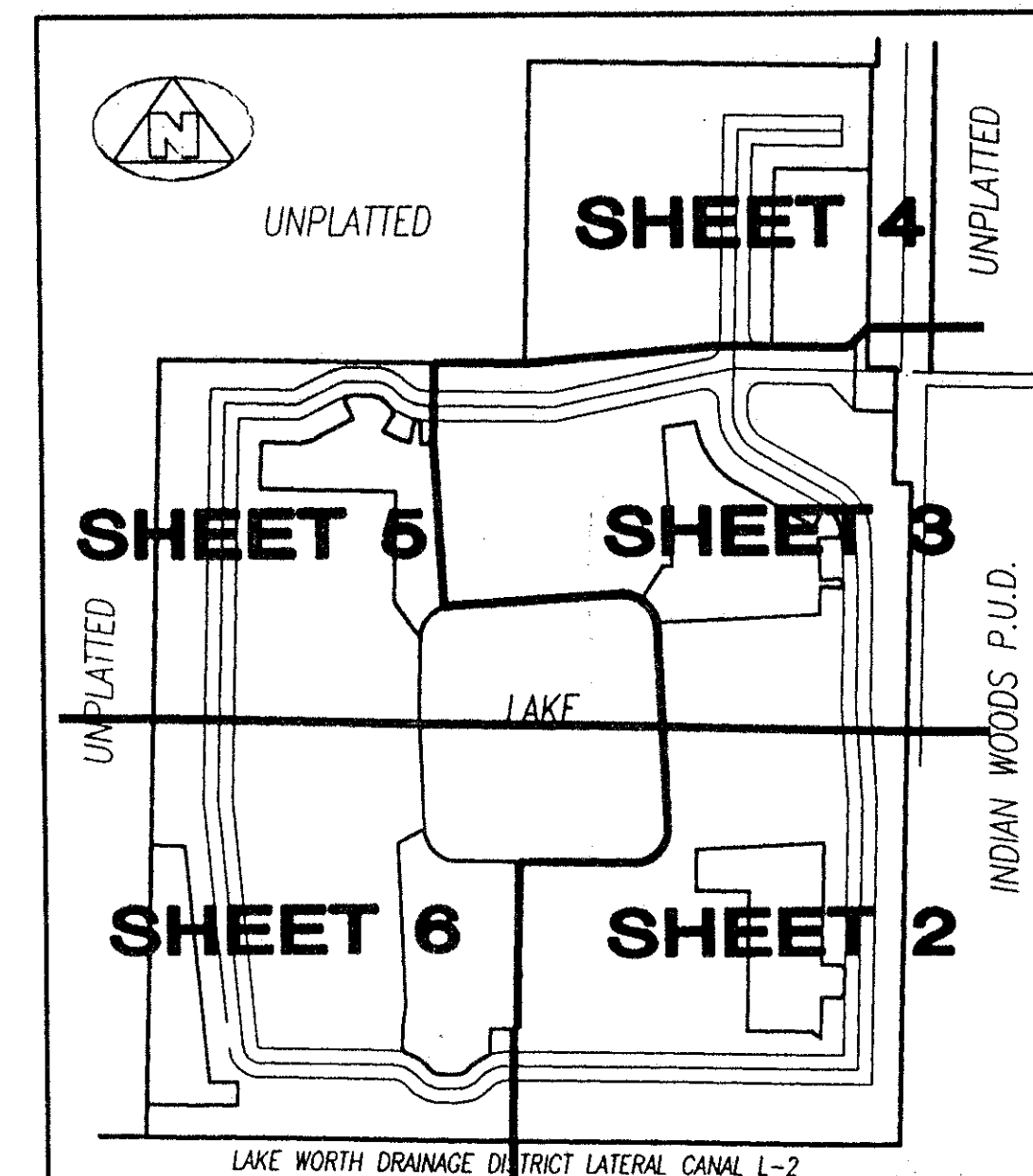
QUAIL WOODS

(A P.U.D.)
LYING IN THE NORTHEAST ONE-QUARTER OF SECTION 25, TOWNSHIP 43 SOUTH, RANGE 42 EAST, PALM BEACH COUNTY, FLORIDA

— UNPLATTED —



0 10' 20' 40'
GRAPHIC SCALE
(IN FEET)
SCALE: 1" = 20'



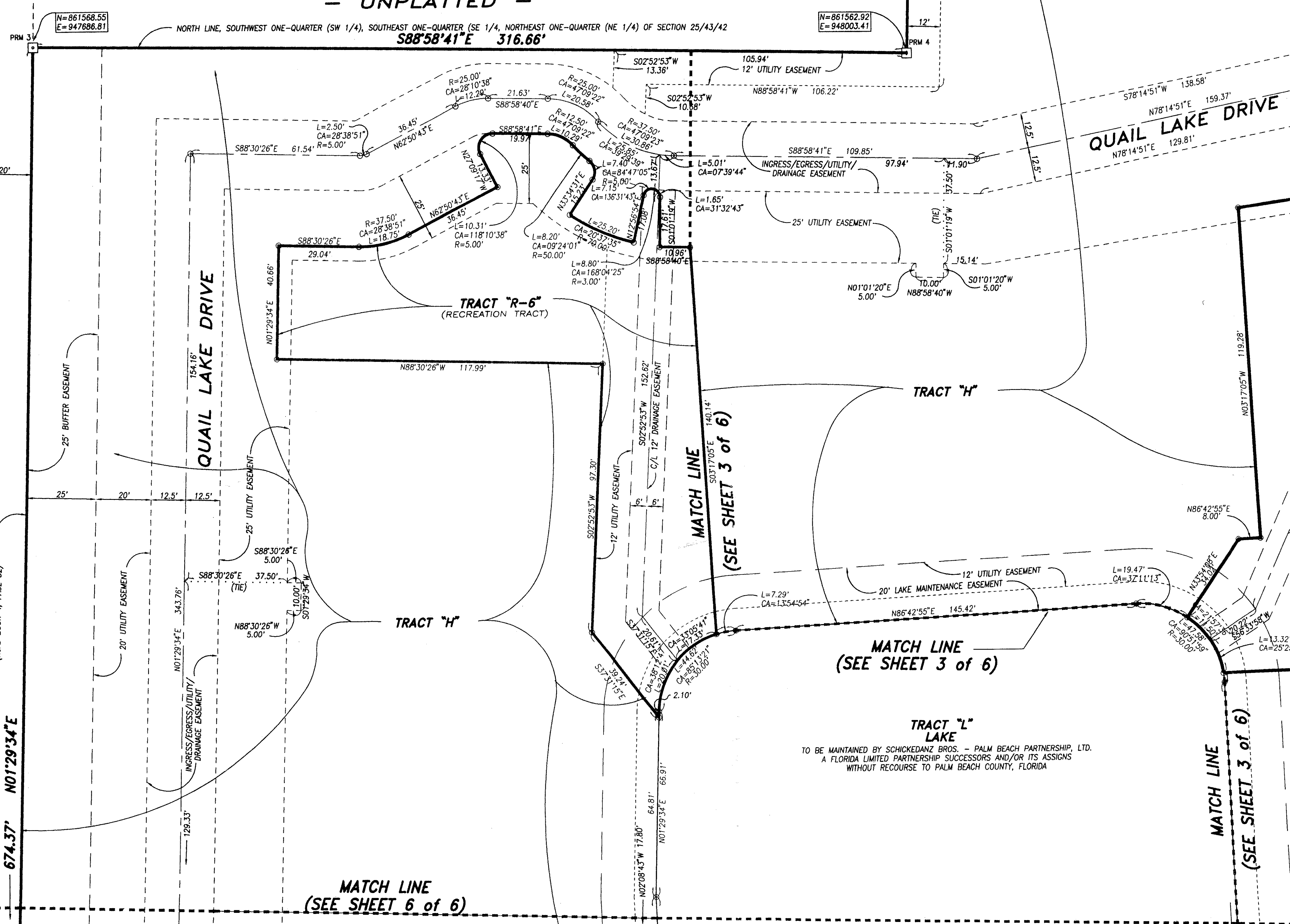
KEY MAP

- SURVEYOR'S NOTES AND LEGEND:
- BEARINGS SHOWN OR STATED HEREON ARE BASED ON, OR ARE RELATIVE TO THE ASSUMED BEARING OF NORTH 88°50'49" WEST ALONG THE SOUTH LINE, NORTHEAST ONE-QUARTER OF SECTION 25, TOWNSHIP 43 SOUTH, RANGE 42 EAST.
 - IN THOSE INSTANCES WHERE UTILITY/DRAINAGE STRUCTURES ARE CONSTRUCTED IN CONFLICT WITH THE PLATTED PERMANENT CONTROL POINTS (P.C.P.) POSITION, STRADDLERS MONUMENTED AS PERMANENT CONTROL POINTS WILL BE SET TO REFERENCE THE PLATTED P.C.P. POSITION.
 - LINE WHICH INTERSECT CURVES ARE NOT RADIAL, UNLESS OTHERWISE NOTED.
 - C/L DENOTES A CENTERLINE
 - PRM DENOTES A SET #2424 PERMANENT REFERENCE MONUMENT (P.R.M.)
 - PCP DENOTES A SET #2424 PERMANENT CONTROL POINT (P.C.P.)
 - PRM DENOTES A FOUND #2424 PERMANENT REFERENCE MONUMENT (P.R.M.)
 - PCP DENOTES A FOUND #2424 PERMANENT CONTROL POINT (P.C.P.)
 - N=860909.29 DENOTES NORTHING STATE PLANE GRID COORDINATE
 - E=948322.77 DENOTES EASTING STATE PLANE GRID COORDINATE

*Pet. 85-86
5/2/2/E*

SUBDIVISION * Quail Woods
BOOK 75 PAGE 53
FLOOR MAP # 1550
ZONING R/H
QUAD # 31
SE 85-86(B)
PUD NAME SCAM
25/43/42

TAZ 211



COORDINATE, DISTANCE, AND BEARING NOTES:

- THE COORDINATES SHOWN HEREON ARE STATE PLANE GRID COORDINATES ACCORDING TO THE TRANSVERSE MERCATOR PROJECTION OF THE FLORIDA EAST ZONE, N.A.D. 83, PER THE 1990 ADJUSTMENT.
- THE LINEAR DIMENSIONS SHOWN HEREON ARE GROUND DISTANCES IN U.S. FEET AND DECIMAL PARTS THEREOF.
- THE GROUND DISTANCE TO GRID DISTANCE SCALE FACTOR IS 1.0000395 (GROUND DISTANCE X SCALE FACTOR = GRID DISTANCE)
- THE COMMON LINE BETWEEN THIS PLAT AND THE PALM BEACH COUNTY SECTIONAL DATUM (N.A.D. 83, 1990 ADJUSTMENT) IS THE SOUTH LINE OF THE NORTHEAST ONE-QUARTER OF SECTION 25, TOWNSHIP 43 SOUTH, RANGE 42 EAST.

COMMON LINE PLAT BEARING = N.88°50'49"W.
COMMON LINE GRID BEARING = N.88°50'51"W.
PLAT TO GRID BEARING COUNTERCLOCKWISE ROTATION = 00°00'02"

0491-002
75/53

This instrument was prepared by Wm. R. Van Campen, R.L.S., in and for the offices of Bench Mark Land Surveying & Mapping, Inc., 4152 West Blue Heron Boulevard, Suite 121, Riviera Beach, Florida

BENCH MARK
Land Surveying and Mapping, Inc.
(407) 844-9659

RECORD PLAT
QUAIL WOODS
A P.U.D.

DWN	FB	DATE 05/01/95	FILE P10-42/2wg	SCALE 1" = 20'	SHEET 5 OF 6
-----	----	---------------	-----------------	----------------	--------------